

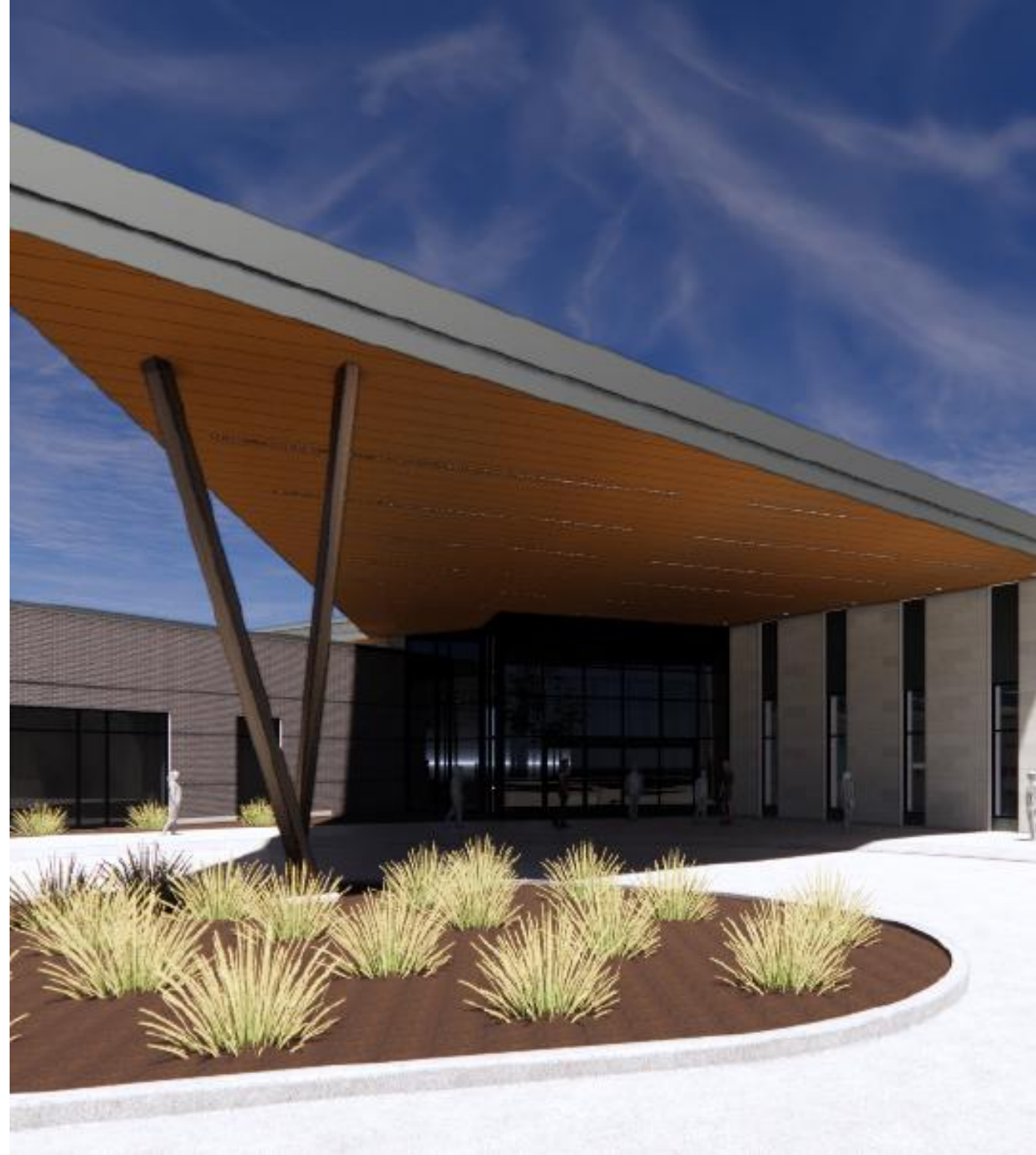


ACTIV

Now Open

About ACTIV

- ▶ 50 and older
- ▶ 74,000 square feet
- ▶ Two Entrances
 1. Active Side: full-court gymnasium, 1 indoor lap pool, 1 indoor wellness pool, fitness area, indoor track, aerobics room.
 2. Social Side: coffee, social activities, low impact fitness classes, event spaces, billiards room, meals on wheels, lunch & learns, etc.
- ▶ Outdoors
 - ▶ Community Garden, terrace, patio, 6 outdoor pickleball courts, trail (.75 miles).



ACTIV Staff



Jordan Taylor
General Manager



Shelby Burescia
Guest Services
Coordinator



Vanicia Edwards
Service
Representative

Susie Traylor
Recreation Program
Coordinator

Daniel Luna
Administrative Aide II





Hanna Beattie
Fitness & Sports
Program
Coordinator



Chris Hayden
Aquatics Program
Coordinator

ACTIV

Membership Information

Blue

- Basketball Gym
- Open & Lap Swim

Green

- Basketball Gym
- Open & Lap Swim
- Fitness Equipment
- Track

Gold

- Basketball Gym
- Open & Lap Swim
- Fitness Equipment
- Track
- Instructor-Led Classes

MEMBERSHIPS

MUST BE 50+ TO USE ACTIV / \$8 DAY PASS AVAILABLE

CATEGORY +AGES	BLUE	GREEN	GOLD	+ 20% OFF select programs
	Gymnasium, Open & Lap Swim	Fitness Equipment, Track, Gymnasium, Open & Lap Swim	Instructor-led Classes, Fitness Equipment, Gymnasium, Track, Open & Lap Swim,	

RESIDENT RATE PER MONTH WITH AUTODRAFT +\$8 FOR MONTH TO MONTH

ADULT 50-59	\$16	\$20	\$32
SENIOR 60-79	\$5	\$18	\$26
SUPER SENIOR 80+	SEE GOLD	SEE GOLD	\$2

NON-RESIDENT RATE PER MONTH WITH AUTODRAFT +\$8 FOR MONTH TO MONTH

ADULT 50-59	\$20	\$26	\$41
SENIOR 60-79	\$10	\$26	\$33
SUPER SENIOR 80+	SEE GOLD	SEE GOLD	\$5

Family memberships available (2-5 members). Splashpad, Skating, or Kids Club are not at ACTIV but may be available at other locations. Visit naturallyfun.org for more information.

RENTALS

MUST BE 50+ TO RENT AT ACTIV

FULL GYMNASIUM	\$100/HOUR	Additional rental information available! Please ask ACTIV staff or call 817-575-3400.
HALF GYMNASIUM	\$75/HOUR	

FACILITY

GENERAL RULES

In order to participate in open gym or use fitness equipment, all participants must have a membership or a day pass and present a valid photo ID and proof of address. Children under the age of 10 must be supervised by a guardian 15 or older who also has a valid membership.

CONDUCT

Disruptive behavior is not tolerated at any time. Proper language, etiquette and respect are expected at all times.

Arlington Parks & Recreation does not discriminate based on race, color, religion, sex, sexual orientation, gender identity, national origin, age, disability, or any other characteristic protected by law.

Fitness Classes

- Strength
- Functional Strength
- Yoga
- Chair Yoga
- Tai Chi
- Yoga Fusion (Pilates)
- Power Hour
- Dance Exercise
- Line Dance
- Chair Exercise





Aquatics

- Lap Pool
- Wellness Pool
 - Water Aerobics Classes
- Locker Rooms

Rental Information

- Post Oak Hall | Capacity 320
 - Can be one large room or split into two.
- Terrace | Capacity 100
 - Comes with the Ballroom
- The Elm | Capacity 261
 - Can be split into four different spaces.
- Redbud | Capacity 80























