



# ND NARFE News

National Active & Retired Federal Employees  
North Dakota NARFE Federation Publication

July 2010

Published Biannually

Vol.18 No. 1

## Cover Story

### Support State Legislative Bill for Tax Relief

An agenda item was proposed for the NARFE Executive Board Meeting in September 2009. This relates to statewide action and support by NARFE members to support a bill in the North Dakota Legislative Season 2011 pertaining to moving the

**Now is the time!**

\$5,000 income credit from ~~the~~ Tax Form, which few people use, to the Short Form. In essence if passed, this bill would deduct \$5,000 of federal retiree dollars from the North Dakota income tax. To broaden support, I had included volunteer firefighters, highway patrol, and military, including National Guard retirees.

Representative Ralph Metcalf in the 2009 session, ~~but~~ NARFE members showed up to testify in its favor. Mr. Sloan from Williston and someone from Grand Forks were the only ones who had contacted their legislators about it.

Passage of this bill would treat us similarly to social security retirees. What is required is getting familiar with the bill, previously HB1411; talking to your local legislators about it; getting to know your local legislators; have testimony ready for the hearings; show up; and speak up.

This is really a fairness issue.

However, the bill will affect tax

revenue, so we must push its positive sides: Getting more retirees to stay in North Dakota; helping our senior citizens like we do with Homestead Credit, etc. Many states have done this, and if North Dakota is to do it, now is the time. The effort is up to NARFE, firefighters, highway patrol, military, and the National Guard. If we work together, it can be done.



Rep. Matthew Klein  
Minot Chapter 1377

Rep. Matthew M. Klein  
Minot Chapter 1377

## Recruit a New Member | Win Money

Simply by recruiting one new member makes you eligible for a drawing that will be held at the next 2011 NARFE Statewide Convention in Fargo. You



December 31, 2010. The new member does not have to join the North Dakota Federation. They could join a chapter in another state.

do not have to be present to win. Your chances of winning will be based on the luck of the draw. Three prizes will be drawn from all the names entered; one prize per recruiter.

The Federation starts the pot with \$100. Every time a member recruits another member, \$5 will be added to the pot. The maximum amount of the pot is set at \$100. means we have a goal of recruiting at least 100 new members (100 x \$5 plus \$100 = \$600). The contest started May 1 and will run through

First name drawn will get 50% of the pot.  
& " | 2 ± \$ ± π ° " \$ μ π ° ±  
of the pot.  
' « - μ \$ ± π ° " \$ μ π ° ±  
of the pot.

The more new members you recruit, the greater your odds of winning.

(Continued on page 5)

## INSIDE

- Features . . . . . 1 . . .
- ND Executive Board News . . . . . 2
- # μ " ¶ - \$ " ± · ¶ | 2 " ¶ | \$ π α " . . . . . 3 . . .
- Membership Report . . . . . 3 . . .
- # , ¥ - - | " % " - π . - 2 ± 4 ¶ | % " 3 2 μ . . . . . 4 . . .
- & " μ 1 - | " " © © - | " μ 4 ¶ | % " 3 2 μ . . . . . 5 . . .
- % ¼ ¼ · « ¶ | . . . . . 15 · « \$ π ¼ . . . . . 6 . . .
- - ½ « " - ° " μ ¶ | % " 3 2 μ . . . . . 7 . . .
- Chapter News . . . . . 6 . . .
- Chapter Contact Information . . . . . 7 . . .
- Congressional Delegation. . . . . 7 . . .
- Federation & Chapter Contacts 8

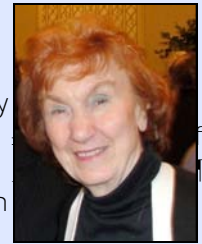
# ND Federation Board in the News

## Know Your Board Members:

I was born and raised in North Dakota. When I got married, I lived out-of-state for a short time. After my husband died, I returned to Bismarck with three young children to raise. Fortunately, I found a bookkeeping job that allowed me to work out of my home.

In 1974, I became involved in politics, helping with Governor's office and eventually Senator involved in many organizations, and do a lot of volunteering.

completed the Stephen Ministry Course & a care & giving outreach program through the church. My pride and joy are my four great-grandsons.



Darlene Turitto  
3-Year Board Member

## 37th Annual Statewide Convention News Release

The North Dakota NARFE Federation held its 37th Annual Statewide Convention at the Radisson Hotel in Bismarck, North Dakota, May 27-29, 2010. Delegates from every North Dakota Chapter attended.

Pre-convention activities included Mini-CONK Leadership Training Sessions, followed by a Town Hall Meeting focusing on membership recruiting.

Attendees at the Historic Noon Luncheon heard Merl Paaverud, Director of the North Dakota State Historical Society, describe plans for the expansion of the North Dakota Heritage Center.

Eight past presidents and their spouses attended the Past Presidents Luncheon.

Following lunch, Host Chapter President Christian Wingire called the General Session to order. The AMVETS Post #9 Color Guard presented the colors. Bismarck Mayor John Warford welcomed everyone to the Bismarck-Mandan area. North Dakota Senators Conrad and Dorgan, and Representative Pomeroy also greeted the delegates. National President Margaret

Baptiste addressed the convention via a digital video message.

Federation President Larry Leier introduced Keynote Speaker Jacob Cassady, NARFE Legislative Specialist who talked about NARFE related issues:

- z Health Care Reform;
- z Federal deficit;
- z The National Commission on Fiscal Responsibility and Reform;
- z Danger of congressional attacks on federal retiree retirement benefits; and

Importance of *Meet Your Congressional Delegation Month* in August.

Region V Vice President Richard Thissen reported on:

- z Potential changes in the FEHBP health insurance as a result of Healthcare Reform;
- z Concerns about the National Commission on Fiscal Responsibility and Reform;
- z Possibility of proposals to reduce federal retiree benefits, since our numbers are small compared to Social Security



Darrell Pittman (left) talks to Rep. Pomeroy at Convention

retirees. Thissen pointed out that our federal retirement trust fund is fully funded, but thereed to make changes in Social Security may influence Congress to make changes in our retirement program as well;

The financial crisis at NARFE headquarters and emphasized the importance of a dues increase to keep our organization solvent. Thissen stressed that federal retirees have not lost any benefits since 1993, due in large part to the efforts of NARFE.

The Bismarck Chorus provided musical entertainment during the Thursday evening banquet. Charitable donations were raised for contributions for NARFE PAC were given.

*Richard Cunningham  
Federation Secretary-Treasurer*



D U g h D f Y g J X Y b h g D @ i D W Y C b  
NARFE State Convention

**ND NARFE News**

**2010 Publication Schedule**

*Please submit articles by October 22 for the November 2010 issue.*

Editor: Bonna Cunningham  
Assistant Editor: Darlene Turitto

D f Y g ] X Y b h Ð g ' A Y g g U [ Y



Larry Leier  
Federation President

Meet your Congressional Delegation  
The month of August is your Congressional Delegation

where public funds were used, or other open events. A list of town hall meetings is posted on the NARFE web site, under the Legislation link, under NARFE Legislative Meetings) toward the bottom of web page.



2010-2011 Federation Officers  
Matthew Klein, 1-Year Board Member (Left), Richard Cunningham, Secretary - Treasurer; Larry Leier, President; Christian Wingire, First Vice President; Arden Mathison, Second Vice President; Darlene Turitto, 3-Year Board Member, Frank Gross, 2-Year Board Member

recess from August 10, a good time to meet your delegates. Arrange a forum or meeting with your delegates. Include as many NARFE members as you can.

I cannot emphasize enough the importance of meeting your delegates, whether in person, by phone, letter or email. Federal employees and retirees will be facing many challenges to their benefits as Congress tries to get the budget deficit

to continue to carry out the mission of NARFE. Recruiting and retention continue to be a priority.



Be flexible in setting up your meetings.

We need to be ready to get the word out. Internet is one of the quickest methods to reach our NARFE members

Recruiting Contest

Try to accommodate a rule. A few minutes of face-to-face time, discussing NARFE legislative concerns can

and alert them on pending legislation that could affect our benefits. Then it is up to you to contact our Congressional delegation.

The State Federation Board has implemented a state wide recruiting contest. A plan of action has been implemented and emailed to all chapter presidents and federation officers. Everyone is eligible and encouraged to participate (except for the Executive NARFE Board) in the contest and the prizes to be awarded

give you a good idea of the delegation informed of your views on various issues affecting our earned benefits by letter, telephone or email. Go to the NARFE website, [www.narfe.org](http://www.narfe.org) Click on legislation.

ND Federation Convention

We have just concluded the 37th annual ND State NARFE Federation Convention. The Bismarck-Mandan Chapter did a great job in hosting the convention. Thank you to all of you.

We must continue to let active and retired federal employees know what NARFE is doing for you.

Have a great summer.

If having congressional delegates at a chapter meeting is not possible, go to an event where they are scheduled to appear, including town hall meetings, dedications for activities

I was reelected as your federation president. As your president, I plan

Larry Leier

ND Federation President



Time for Communication and Involvement

We are all saddened by the great loss of members last year has again been replaced by recruitment. the mission of NARFE. May he rest in peace.



since I have become involved." As I have said before, "The squeaky wheel gets the grease."

Recruitment and retention is key to our longevity. To achieve this we must learn how to unlock the minds of the non-believers. The communication and involvement. I believe a calling committee is necessary for involvement and retention. As one member said " I have learned a lot

Have a good summer and keep up the good work for North Dakota.

Jim Moore

Federation Membership Chair

# Committee Reports

## Public Relations Reports on Loss of Membership

Donelda and I want to give our board approved a recruiting contest condolences to Ann Indergaard and to help boost the interest to get her family on their loss of her great life partner and father. We all grieve the passing of a fellow NARFE member, a mentor and a fine gentleman. He will be missed

My public relations article is with great concern over our continued loss of membership. The national office has given us a rewards system contest they are sponsoring, the matching funds program. At the post convention board meeting

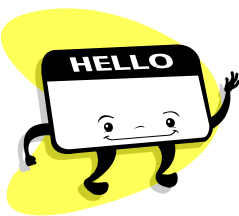


and recruit new members. (See our purpose with them and let current employees know how vulnerable their benefits are. Senator Tom Coburn R-OK is at it again trying to reduce the current federal employees benefits by freezing the proposed 1.4 percent pay raise in 2011. We need the current workers help, so we can help them fight any reduction and recruit current Federal employees as they are our best possibilities for new members.

Leon T. Lauer  
Federation PR Chair



## New Service Officer PLUS Scam and Anti -Fraud Help



I am Eugene Pekarek, your new North Dakota Federation Service Officer, and am in the learning

- z Click on the Anti-fraud Resources item in the left hand bar.
- z In the central bar click on National Bank AntiFraud Resource Center Consumer Information.

- Congressional Voting Records
- [www.votesmart.org](http://www.votesmart.org)
- [www.issues2000.org](http://www.issues2000.org)

- NARFE Related Issues
- Global Electronic Messaging Systems (GEMS)
- If you sign up for this, you will get emails from NARFE about details that will or may impact its members.

process. So please use your NARFE Magazine, since it has most of the current information that is needed.

I would like to extend a thank you to our former Service Officer Lew Schaper. He did an outstanding job.

Lew submitted the following information about anti-fraud and the new F100 form.

Eugene J Pekarek  
Federation Service Officer

- National Health Care Anti-Fraud Association: [www.nhcaa.org/eweb](http://www.nhcaa.org/eweb)
- z Click on AntiFraud Resource Center tab
- z Click on one of the following from the drop down menu:
  - 1 The Problem of Health Care Fraud
  - 1 Consumer Information & Action
  - 1 Scammed
  - 1 Health Care AntiFraud Resources

- To sign up for GEMS, go to [www.narfe.org](http://www.narfe.org)
- z Click on the MEMBERS button
- z Enter your last name & membership number
- z Click SIGN IN button

### Scam and Anti -Fraud

Scams and fraud schemes are out there, so beware. This is a smorgasbord of things that I have used to counter these attempts. Of particular interest is the first one on anti-fraud.

U.S. Treasury Department, Office of the Comptroller of the Currency:  
[www.occ.treas.gov](http://www.occ.treas.gov)

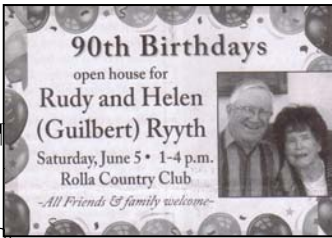
- Verifying Rumors
- [www.snopes.com](http://www.snopes.com) Urban legends reference pages can use to check validity of email messages/rumors
- [www.factcheck.org](http://www.factcheck.org)
- [www.truthorfiction.com/rumors](http://www.truthorfiction.com/rumors)

New F - 100 Form  
There is a new F-100 Form. The old form had 11 pages. The new form has 23 pages ,so apparently, it addresses a lot more items.

Lew Schaper  
Former Federation Service Officer

# Helen (Guilbert) Ryyth and Rudy Ryyth Celebrate 90<sup>th</sup> Birthdays

On June 5, Helen and Rudy Ryyth, Turtle Mountain Chapter 2168TX, members, celebrated their 90th birthdays.



On March 26, and about 200 guests attended the combined celebration held at the Rolla Country Club, Rolla, North Dakota. Among the guests were Diane and Robert Campbell, Rolla, ND, were there also.

Curt and Carol Guilbert, Austin, 2168TX, Larry and Sandra Guilbert, Edmonton, Alberta, Canada, Terry and Linda Guilbert, Austin, TX, Mike and Susan Guilbert, Deadwood, SD), ten of her 13 grandchildren, her sister (Madge Alme) and many nieces and nephews. Helen was pleased to see a lot of her former students from her teaching career.

(Sherry Lee) and her daughter (Stephanie Johnson) from Larimore, ND, were there also.

They donned sweatshirts or shirts with Monarch butterflies in honor of their 90th birthdays. The tables were decorated with Monarch butterflies to tag and release (monarchwatch.org). The tables were also decorated with weaving pieces in honor of her late husband Rudy.

Helen Knutt  
Turtle Mountain Chapter President

# BYK 5 n Y J a Y f D g 7 U J f



Darlene Danielson,  
New Federation  
BYK 5 n Y J a Y f D g 7 U J f

Hello everyone! I am pleased to announce that I have been elected as the new Federation Chair. I would like to thank Art Lund, Former Federation Chair, for his many years of service and for the guidance he has given me as I take on the new responsibilities.

at our 2010 NARFE State Convention. This year, we tried something new a Theme Basket Silent Auction. The auction, plus a framed print (donated by Christian and Diane Wingire), and donations from two exhibitors, account for the fund raising success. Thank you to everyone for your contributions.



Theme Basket Auction  
2010 NARFE State Convention

Your generosity is appreciated. In the near future, I will be continuing to coordinate efforts for the 2010-2011 fiscal year (July 1st to

July 31st). I will be continuing to coordinate efforts for the 2010-2011 fiscal year (July 1st to

July 31st). I will be continuing to coordinate efforts for the 2010-2011 fiscal year (July 1st to July 31st). I will be continuing to coordinate efforts for the 2010-2011 fiscal year (July 1st to July 31st).

Darlene Danielson  
BYK 5 n Y J a Y f D g 7 U J f

# Recruit 1 Win Money (continued from page 1)

If we reach our goal of 100 new members the prizes will be \$300, \$180, and \$120. And you have another incentive that will give you a boost in your recruiting efforts. For every current (still working) employee you recruit, NARFE Headquarters (HQ) will send you \$8. There is no finder's fee when you recruit a retired federal employee, but your chapter will get \$2 from NARFE HQ for a retired employee, and you still get a chance in the drawing.

application, where indicated, and this must be legible. You can get both numbers from the mailing label on your NARFE Magazine. Any numbers not recognized by NARFE HQ will not be included in the drawing and no credit will be given for reinstatements occurring within six months of being dropped. The Federation and NARFE Headquarters have provided the incentives and now it is up to you. Recruit your fellow current employees, or recruit your fellow



retirees, or recruit your spouse, or recruit your mail carrier. The possibilities are almost endless. For blank application forms, see your chapter membership chairs or any chapter officer. You may also use the form in the NARFE Magazine. Chapter Membership Chairs: it is your responsibility to see that you have a supply of membership applications on hand (Form #40A or F-14C). You may order these from the NARFE website or by calling 1-800-627-3394. Is everyone ready? Good! Start recruiting!

Don Lein  
 Fargo-Moorhead Chapter

# Chapters in the News

## Bismarck - A U b X U b ' 6 c k ` g ` Z c f ` 5 ` n \ V l e V f D a

At noon on March 6, 2010, four bowling teams, organized by the Bismarck-Mandan Chapter 0195, Fun Day at Midway Lanes, Mandan, North Dakota. A total of thirteen teams (52 bowlers) enjoyed the activities door prizes, silent auction, lunch, and the friendly competition.

NARFE Bowling Team (one of four)  
Arden Mathison (left), Christian Wingire, Diane Wingire, and Ralph Feland



## Fargo-Moorhead Answers Phones

Fargo-Moorhead Chapter 0119 assist Prairie Public every year. This photo was taken at the November NARFE members is a good way to support the com-

NARFE at Prairie Public TV Telethon  
Jean Parròw (left), Don Lein, Alvina Lein, Joyce Hesse, Jan Hammer, and Chris Hesse



## Keeping the Chapter Going

Turtle Mountain Chapter 2168 is going strong again but a year ago, members had voted to close it. How did the chapter continue in the face of these odds?

In April 2009, after many years of service with the last several years as chapter president, Helen Guilbert Ryyth decided to step down; however, no one volunteered to fill the office. In fact, the remaining officers also decided not to continue.

At the time, I was in Arizona. Shortly after the meeting, I received a letter from the chapter, indicating the members were voting on the future of the chapter. I wanted to keep the chapter open, so on my proxy had volunteered to take whatever office was needed to keep the organization going.

I was not able to attend the May meeting, due to out-of-state family commitments. Upon my return on May 29, I learned the chapter had voted to close. Only four days remained until the June 2 meeting, but I hoped we could reverse that decision. With the support of Florence Oakland, we began putting together a slate of officers. I would run for president, if she would take the first

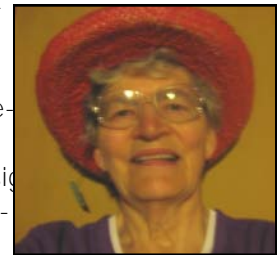


Tree with Missing Branch

made by the federation president. Fortunately, Federation President Larry Leier came to the June meeting, where I presented a petition to keep the chapter open. With enough signatures on the petition, President Larry added his support and postponed any actions to close the chapter, thus allowing us time to rally our members.

On July 14, we had a membership and reorganization meeting in Cando, inviting all federal active and retired employees in the area. President Larry and Federation Immediate Past President Leon Lauer gave presentations. Twelve people came, all staunch supporters of NARFE. We had an excellent meeting. I wore my Minnie Pearl hat with the price tag hanging \$2.00. I had a photo of a tree with a missing branch, symbolic of NARFE without the Turtle Mountain Chapter.

At our September meeting, we had our elections with a full slate of officers. Our current secretary, Connie Snell, volunteered to continue another year. Gerald Maurseth became our treasurer. Frances Wall filled the office of second vice president. Our chapter was active once again. As President Larry told us at the



Helen Knutt with Minnie Pearl Hat

The NARFE Chapter and Federation Officers Manual indicated that the final decision to close a chapter is

Helen Knutt  
Turtle Mountain Chapter President



alzheimer's association  
**memory walk**

Bismarck September 18	Minot September 25
Dickinson September 11	West Fargo September 18
Grand Forks September 11	Williston October 2

[www.alz.org/mnnd](http://www.alz.org/mnnd)

**Chapter meeting information**

Chapter 0119, Fargo -Moorhead. For info 701.293.9035. Meets second Wednesday, 12:30 p.m. at Sons of Norway, Fargo. (Except August.) For info 701.293.9035.

Chapter 0195, Bismarck -Mandan. Meets second Tuesday at Bismarck Elks Lodge, lunch line opens at 11 a.m., meeting begins at noon. (Except June, July and August.) For info 701.255.4235.

Chapter 0895, Red River Valley. For info 701.772.4546. Meets third Thursday every other month (Jan, Mar, May, July, Sept, Nov) at Best Western Townhouse Motor Inn, Grand Forks. For info 701.772.4546.

Chapter 1377, Minot. For info 701.839.5362. Meets first Thursday, 10:00 a.m. at Parker Senior Center, Minot. (Except July and August.) For info 701.839.5362.

Chapter 1839, Valley City. Meets second Tuesday, 12 p.m. (noon) at Valley City Senior Citizens Center, Valley City. (Sept through May) For info 701.845.2943.

Chapter 1863, Rough Rider. Meets second Thursday, 11:45 a.m. (Mountain Time) at Grand Dakota Lodge & Days Inn, Dickinson. (Except June, July, and August.) For info 701.225.2309.

Chapter 2168, Turtle Mountain Chapter. Meets first Tuesday on a rotation basis at Bottineau, Rolla, Cando, Rugby, and Belcourt. (Except January, February, March and July.) For info 701.266.5574.

Chapter 2244, Williston Northwest. Meets first Wednesday, 11:30 a.m. at Heritage Center, Williston. For info 701.774.8747.

**CONTACT INFORMATION  
CONGRESSIONAL DELEGATION  
NORTH DAKOTA**

**SENATOR KENT CONRAD**  
Phone: 202.224.2043; FAX: 202.224.7776  
Email: [conrad.senate.gov/contact/webform.html](mailto:conrad.senate.gov/contact/webform.html)  
530 Hart Senate Office Building  
Washington, DC 20510-3403

100 1st Street SW, Room 105  
Minot, ND 58701  
Phone: 701.852.0703; FAX: 701.838.8196

220 East Rosser Ave, Room 226  
Bismarck, ND 58501  
Phone: 701.258.4648; 800.223.4457  
FAX: 701.258.1254

102 North 4th St, Rm 104  
Grand Forks, ND 58203  
Phone: 701.775.9601; FAX: 701.746.1990

657 2nd Ave N, Rm 306  
Fargo, ND 58102  
Phone: 701.232.8030; FAX: 701.232.6449

**SENATOR BYRON DORGAN**  
Phone: 202.224.2551; FAX: 202.224.1193  
Email: [senator@dorgan.senate.gov](mailto:senator@dorgan.senate.gov)  
713 Hart Senate Office Building  
Washington, DC 20510-3403

220 E. Rosser Ave; Room 312;  
Bismarck, ND 58501  
Phone: 701.258.4618

1802 3rd Ave So; Suite B  
PO Box 906  
Fargo, ND 58106  
Phone: 701.239.5112

100 1st St SW; Suite 100  
Minot, ND 58701  
Phone: 701.852.0703

**REP. EARL POMEROY**  
Phone: 202.225.2611; FAX: 202.226.0893  
Email: [www.house.gov/formpomero/zipauth.htm](http://www.house.gov/formpomero/zipauth.htm)  
1501 Longworth House Office Building  
Washington, DC 20515

220 East Rosser Ave, Room 326  
Bismarck, ND 58501  
701.224.0355 Fax: 701.224.0431

3003 32nd Ave S Suite 6  
Fargo, ND 58103  
701.235.9760 Fax: 701.235.9767



ND NARFE News  
1916 Mesquite Loop  
Bismarck, ND 58503-0198

Web Site: <http://www.narfe.org/nd>

NORTH DAKOTA NARFE FEDERATION  
2008-2009 OFFICERS AND COMMITTEES ROSTER

OFFICERS

President  
Larry Leier (VC)  
701.845.2943  
*maleier@yahoo.com*

1st Vice President  
Christian Wingire (B -M)  
701.752.4482  
*cwingire@daktel.com*

2<sup>nd</sup> Vice President  
Arden Mathison (B -M)  
701.255.4235  
*aemathison@bis.midco.net*

Secretary - Treasurer  
Rich Cunningham (B -M)  
701.258.6937  
*richcunningham@bis.midco.net*

Immediate Past President  
Leon Lauer (RRV)  
701.746.6586  
*nd89narfe@hotmail.com*

BOARD MEMBERS

3-Year Board Member  
Darlene Turitto (B -M)  
701.258.4217

2-Year Board Member  
Frank Gross (F -M)  
218.287.2152  
*lavonne.frank.gross@gmail.com*

1-Year Board Member  
Matthew Klein (M)  
701 838 6309  
*kleinnd@hotmail.com*

REGION V

Vice President  
Richard Thissen  
573.365.5679  
*rthissen99@msn.com*

COMMITTEE CHAIRS

NARFE - PAC Chair  
Alclare Reimers (M) 701.487.3548  
*bayview@westriv.com*

Public Relations Chair  
Leon Lauer (RRV) 701.746.6586  
*nd89narfe@hotmail.com*

Service Officer Chair  
Eugene Pekarek (F -M)  
605.947-4673  
*ejp1004@cablone.net*

Membership Chair  
Jim Moore (F -M) 701.235.8795  
*jim125darlene@aol.com*

Editor/Web Master/Historian  
Bonna Cunningham (B -M)  
701.258.6937  
*richbon10@bis.midco.net*

5` n \ Y ] a Y f Ð g ` 7 \ U ] f  
Darlene Danielson (B -M)  
701-223-0404  
*dardan@bis.midco.net*

CHAPTER PRESIDENTS

Fargo - Moorhead 0119 (F -M)  
David Davis 701.235.8140  
*dgDavis@q.com*

Bismarck - Mandan 0195 (B -M)  
Christian Wingire 701.752.4482  
*cwingire@daktel.com*

Red River Valley 0895 (RRV)  
Lewis Schaper 218.773.1735  
*schaperln@hotmail.com*

Minot 1377 (M)  
Alclare Reimers (M) 701.487.3548  
*bayview@westriv.com*

Sergeant -At -Arms  
Clint Tompt (VC) 701.952.6036  
*ctompt@daktel.com*

Nominating Chair  
Rita Ritter (B -M) 01-258-9141  
*rmritter@bis.midco.net*

Resolutions Chair  
Ruth Phalen (RRV)  
701.772.4546  
*ruthphalen@msn.com*

Auditor  
Don Lein (F -M) 218-498-2025  
*donretrd@aol.com*

Budget  
Lewis Schaper (RRV)  
218.773.1735  
*schaperln@hotmail.com*

Legislative  
Darlene Turitto (B -M)  
701.258.4217

Valley City 1839 (VC)  
Vern Hedland 701.845.4999  
*hedland@q.com*

Roughrider 1863 (R)  
Irene Anderson 701.483.8736  
*alir@ndsupernet.com*

Turtle Mountain 2168 (TM)  
Helen Knutt 701.266.5574  
*whknutt@yahoo.com*

Williston Northwest 2244 (W)  
Donna Peterson 701.774.8625  
*dfpeterson@nemont.net*